

KHSAA Basketball - Game Box Score

Bullitt East Chargers vs. Butler Bearettes

Date: 03/24/2004 Time: 12 Noon CST Site: Diddle Arena-Bowling Green, KY Attendance: N

Visitors: Butler Bearettes

##	Name	P	FG	3 Pt	FT	PTS	ORB	DRB	TR	PF	AST	TO	BS	ST	MIN
4	Katie Pratt		0/0	0/0	0/0	0	0	0	0	0	0	0	0	0	DNP
11	* Jenna Hedges		2/4	1/2	4/4	11	1	2	3	2	5	3	0	2	29:31
20	* Megan McGrath		3/4	1/2	4/6	13	2	1	3	2	0	5	1	2	21:38
21	Jessica Paul		0/0	0/0	0/0	0	0	0	0	0	0	0	0	0	DNP
22	* Mandy Evans		2/5	1/4	2/3	9	0	8	8	2	1	2	0	2	26:29
24	Dana Price		0/0	0/0	0/0	0	0	0	0	0	0	0	0	0	1:00
25	Abby Grunwald		0/0	0/0	0/0	0	0	0	0	0	0	0	0	0	DNP
30	* Ashley Lewallen		5/10	0/1	3/3	13	3	3	6	2	3	7	3	0	26:22
31	Rachel Cummings		1/2	0/0	2/3	4	2	1	3	1	0	1	0	0	10:36
32	Ainsley Lambert		0/0	0/0	0/0	0	0	0	0	0	0	0	0	0	DNP
33	Nicole Holman		2/6	1/2	0/0	7	1	4	5	3	1	1	0	3	21:23
42	Ashley Harper		0/0	0/0	0/0	0	0	0	0	0	0	0	0	0	DNP
53	* Tia Gibbs		1/11	0/0	3/7	5	2	0	2	3	1	2	1	5	23:01
Team							1	3	4						
Totals			16/42	4/11	18/26	62	12	22	34	15	11	21	5	14	160
2 PT FG			1st Half	8/25	32.0%	2nd Half	8/17	47.1%	Game	16/42	38.1%				
3 PT FG			1st Half	2/8	25.0%	2nd Half	2/3	66.7%	Game	4/11	36.4%				
Free Throws			1st Half	4/7	57.1%	2nd Half	14/19	73.7%	Game	18/26	69.2%				

Home: Bullitt East Chargers

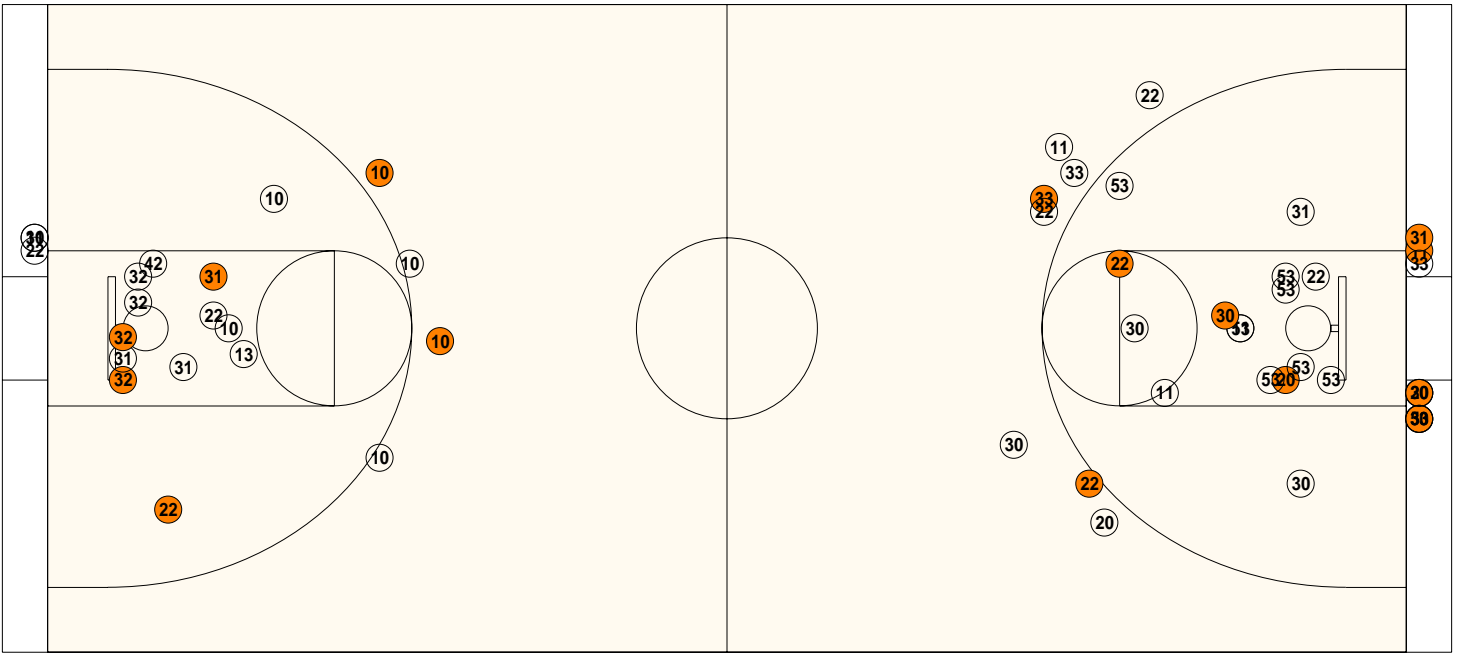
##	Name	P	FG	3 Pt	FT	PTS	ORB	DRB	TR	PF	AST	TO	BS	ST	MIN
3	Stephanie Judd		0/0	0/0	0/0	0	0	0	0	1	0	0	0	0	1:00
10	* Brittany Caple		1/8	3/9	6/6	17	0	6	6	2	2	4	0	1	29:10
11	Jennifer Beichler		0/2	0/0	0/0	0	1	0	1	0	0	0	0	0	2:21
13	* Abby Thompson		2/5	1/1	4/9	11	0	6	6	2	4	11	0	1	27:51
14	Holly Huber		0/0	0/0	0/0	0	0	1	1	1	0	4	0	0	11:59
20	Kathleen Thompson		0/0	0/0	0/0	0	0	0	0	0	0	1	0	0	2:03
21	Stephanie Mueller		0/0	0/0	0/0	0	0	0	0	0	0	0	0	0	1:00
22	* Jacquelyn Bleemel		1/4	0/0	0/0	2	0	1	1	5	1	4	0	1	21:36
23	Mollie Bolin		0/0	0/0	0/0	0	0	0	0	0	0	0	0	0	1:00
31	* Kasey Harrod		1/5	0/1	2/2	4	6	5	11	2	0	1	1	0	24:29
32	Ashton Smith		2/7	0/1	0/0	4	3	2	5	1	2	2	0	2	16:39
42	* Katie Followell		3/5	0/0	3/3	9	1	5	6	3	1	2	3	2	20:52
Team							2	0	2						
Totals			10/36	4/12	15/20	47	13	26	39	17	10	29	4	7	160
2 PT FG			1st Half	4/16	25.0%	2nd Half	6/20	30.0%	Game	10/36	27.8%				
3 PT FG			1st Half	2/4	50.0%	2nd Half	2/8	25.0%	Game	4/12	33.3%				
Free Throws			1st Half	6/8	75.0%	2nd Half	9/12	75.0%	Game	15/20	75.0%				

Free Throw Pts	But 18	Bul 15	3Pt Points	But 12	Bul 12	Pts/Possession	But 0.84	Bul 0.64
Pts off Turnovers	But 17	Bul 17	2nd Chance Points	But 9	Bul 8	Pts off Bench	But 11	Bul 4
Total Rebounds	But 34	Bul 39	Team Rebounds	But 4	Bul 2	Dead Ball Reb	But 4	Bul 3
Off Rebound %	But 31.6	Bul 37.1	Def Rebound %	But 62.9	Bul 68.4	Total Rebound %	But 46.6	Bul 53.4
3Pt Efficiency	But +11.0	Bul +14.8	Def. Stops	But 51	Bul 47	Pts/Shot	But 0.94	Bul 0.81
Technical Fouls	But	Bul	None					
Officials	But	Bul	None					
	Mike Holt, Jenny Mertle, Tommy Hall							

	Qtr 1	Qtr 2	Qtr 3	Qtr 4	OT 1	OT 2	OT 3	OT 4	Total
Butler Bearettes	17	9	20	16	0	0	0	0	62
Bullitt East Chargers	12	8	13	14	0	0	0	0	47

Largest Lead Bul 33 But 50 (17 pts) **Lead Changes** 2 **Number of Ties** 1
Comments: None

FIRST HALF



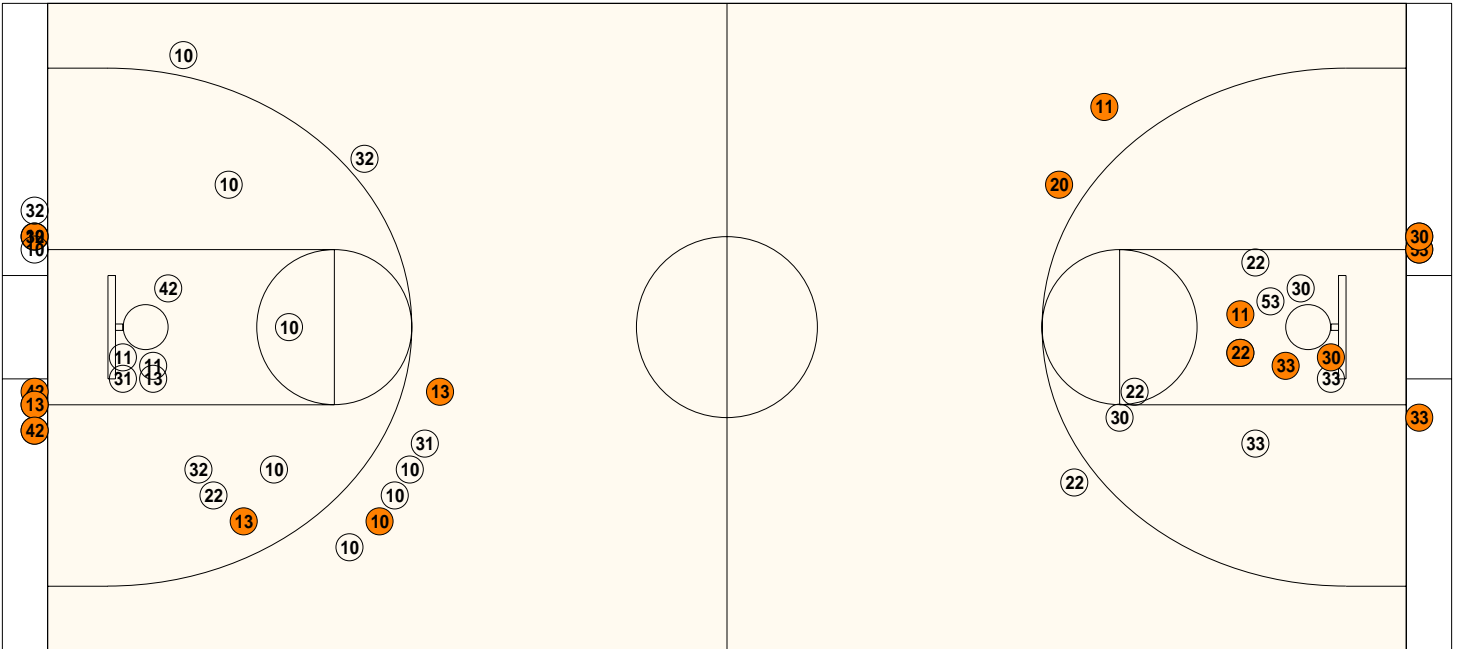
Bullitt East

Shooting	Pts	Pts
2FG 4/16 (25.0%)	8	Pts/Shot 0.83
3FG 2/4 (50.0%)	6	2nd Eff Pts 6
TFG 6/20 (30.0%)		Pts off TO's 5
FT 6/8 (75.0%)	6	3Pt Eff +33.3
Scoring Distribution: 2FG 40.0% 3FG 30.0% FT 30.0%		

Butler

Shooting	Pts	Pts
2FG 8/25 (32.0%)	16	Pts/Shot 0.72
3FG 2/8 (25.0%)	6	2nd Eff Pts 4
TFG 10/33 (30.3%)		Pts off TO's 8
FT 4/7 (57.1%)	4	3Pt Eff +3.7
Scoring Distribution: 2FG 61.5% 3FG 23.1% FT 15.4%		

SECOND HALF



Bullitt East

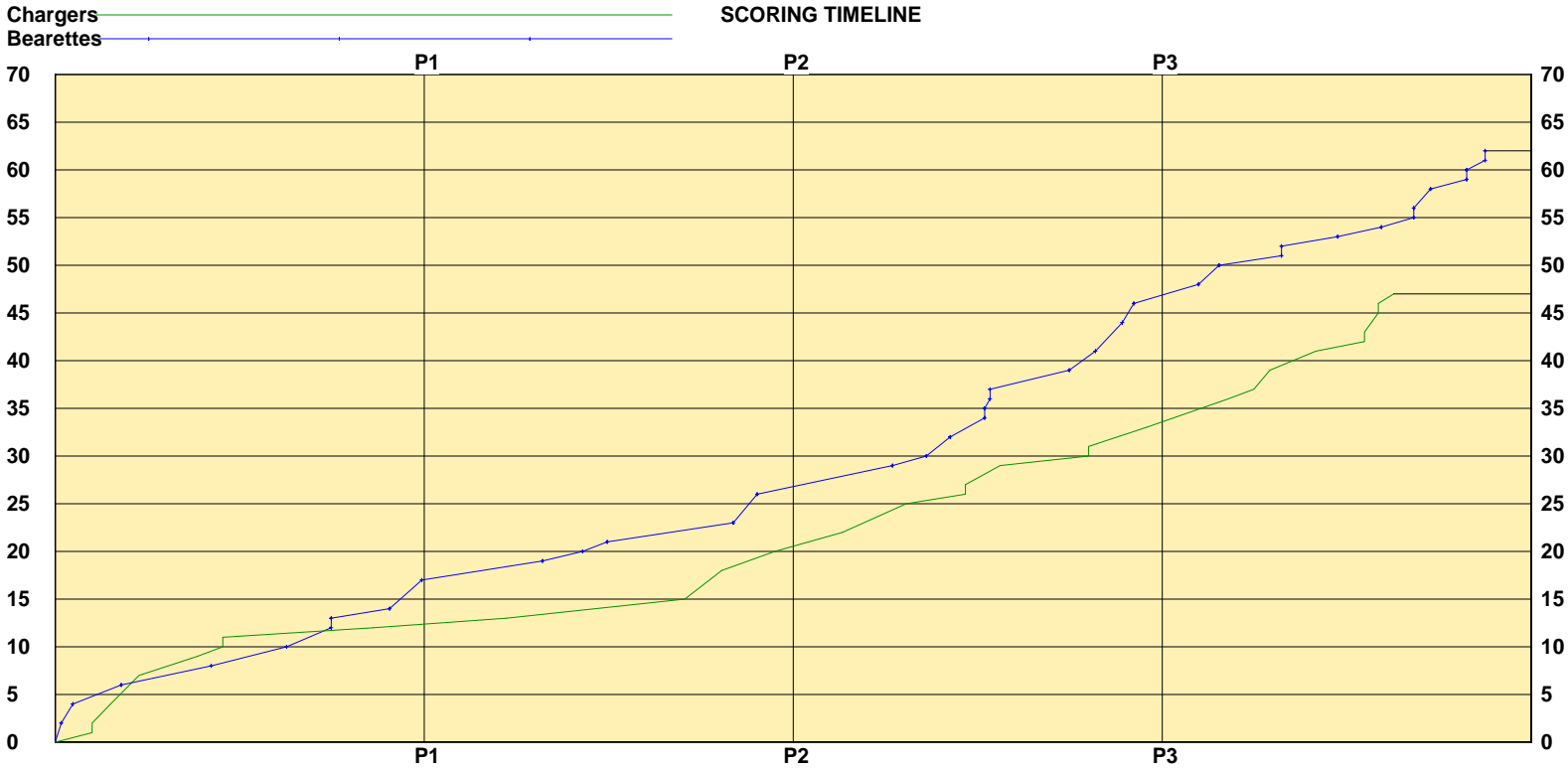
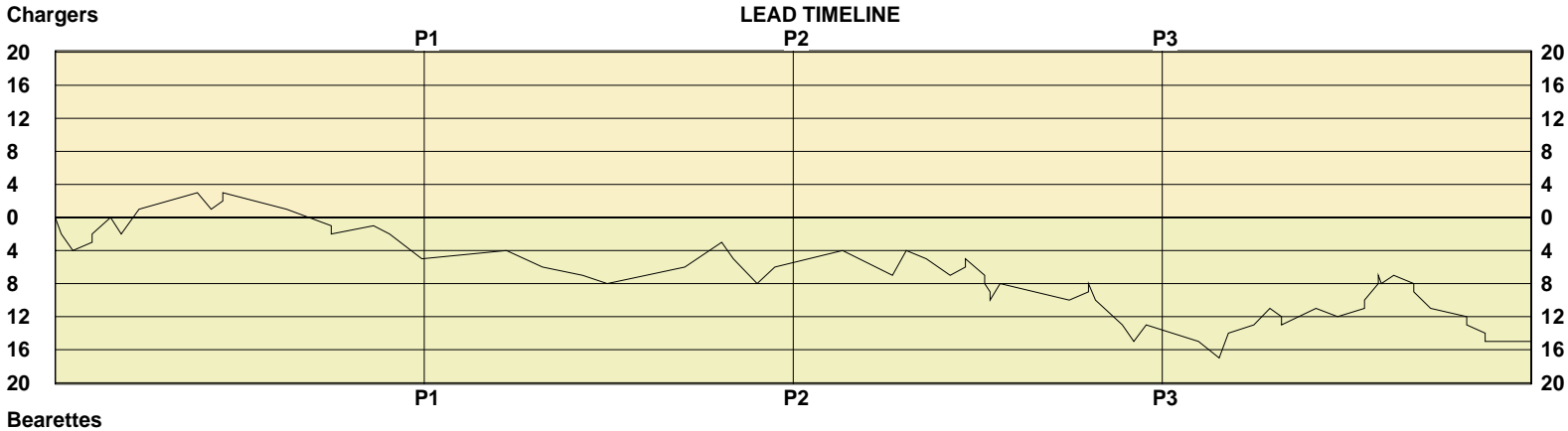
Shooting	Pts	Pts
2FG 6/20 (30.0%)	12s	Pts/Shot 0.79
3FG 2/8 (25.0%)	6	2nd Eff Pts 2
TFG 8/28 (28.6%)		Pts off TO's 12
FT 9/12 (75.0%)	9	3Pt Eff +5.0
Scoring Distribution: 2FG 44.4% 3FG 22.2% FT 33.3%		

Butler

Shooting	Pts	Pts
2FG 8/17 (47.1%)	16s	Pts/Shot 1.24
3FG 2/3 (66.7%)	6	2nd Eff Pts 5
TFG 10/20 (50.0%)		Pts off TO's 9
FT 14/19 (73.7%)	14	3Pt Eff +35.3
Scoring Distribution: 2FG 44.4% 3FG 16.7% FT 38.9%		

KHSAA Basketball - Scoring Timeline Report
 Bullitt East Chargers vs. Butler Bearettes

DATE: 03/24/2004 TIME: 12 Noon CST SITE: Diddle Arena-Bowling Green, KY



Largest Lead Bul 33 But 50 (17 pts) Lead Changes 2 Number of Ties 1

KHSAA Basketball - Play by Play Report - Scoring Only (pg 1)

Bullitt East Chargers vs. Butler Bearettes

Date: 03/24/2004 Time: 12 Noon CST Site: Diddle Arena-Bowling Green, KY Attendance: N

Name	Action	Action	Score	Clock	Diff	Name	Action	Action
			0-2	1	7:52 -2 (L1)	A Lewallen	Layup Made	J Hedges Assist
			0-4	1	7:37 -4	M McGrath	Layup Made	J Hedges Assist
B Caple	FT Made		1-4	1	7:12 -3	J Hedges	Personal Foul	
B Caple	FT Made		2-4	1	7:12 -2			
J Bleemel	FG Made	A Thompson Assist	4-4	1	6:48 (T1)			
			4-6	1	6:34 -2	M McGrath	FG Made	
B Caple	3Pt Made	A Thompson Assist	7-6	1	6:11 +1 (L2)			
K Harrod	FG Made	J Bleemel Assist	9-6	1	4:55 +3			
			9-8	1	4:37 +1	A Lewallen	Layup Made	J Hedges Assist
K Followell	FT Made		10-8	1	4:22 +2			
K Followell	FT Made		11-8	1	4:22 +3			
			11-10	1	2:59 +1	J Hedges	Layup Made	T Gibbs Assist
			11-12	1	2:01 -1 (L3)	R Cummings	Layup Made	J Hedges Assist
J Bleemel	Personal Foul		11-13	1	2:01 -2	R Cummings	FT Made	
A Thompson	FT Made		12-13	1	1:06 -1			
			12-14	1	0:45 -2	T Gibbs	FT Made	
			12-17	1	0:03 -5	N Holman	3Pt Made	

End of Period Summary Chargers 12 Bearettes 17

Largest Lead: Chargers 12 Bearettes 17 (5 pts)

Lead in Period: Chargers 12 Bearettes 17 (5 pts)

10 for 7 oppo pts

1 for 2 pts

3/6 for 50.0 %

5/6 for 83.3 %

Turnovers

2nd Chances

Field Goals

Free Throws

Lead Changes: 3 Ties: 1

Lead Changes: 2 Ties: 1 (this period)

3 for 3 oppo pts

3 for 3 pts

7/18 for 38.9 %

2/3 for 66.7 %

A Thompson	FT Made		13-17	2	6:13 -4			
			13-19	2	5:26 -6	A Lewallen	FG Made	J Hedges Assist
			13-20	2	4:34 -7	M McGrath	FT Made	
			13-21	2	4:02 -8	R Cummings	FT Made	
A Smith	Putback Made		15-21	2	2:21 -6			
B Caple	3Pt Made	A Smith Assist	18-21	2	1:33 -3			
			18-23	2	1:18 -5	M Evans	FG Made	
			18-26	2	0:47 -8	M Evans	3Pt Made	A Lewallen Assist
A Smith	Putback Made		20-26	2	0:24 -6			

End of Period Summary Chargers 20 Bearettes 26

Largest Lead: Chargers 13 Bearettes 21 (8 pts)

Lead in Period: Chargers 13 Bearettes 21 (8 pts)

6 for 1 oppo pts

5 for 4 pts

3/14 for 21.4 %

1/2 for 50.0 %

Turnovers

2nd Chances

Field Goals

Free Throws

Lead Changes: 3 Ties: 1

Lead Changes: 0 Ties: 0 (this period)

4 for 2 oppo pts

4 for 1 pts

3/15 for 20.0 %

2/4 for 50.0 %

A Thompson	FG Made	B Caple Assist	22-26	3	6:56 -4			
			22-29	3	5:51 -7	J Hedges	3Pt Made	N Holman Assist
B Caple	3Pt Made	A Thompson Assist	25-29	3	5:33 -4			
K Harrod	Personal Foul		25-30	3	5:07 -5	T Gibbs	FT Made	
			25-32	3	4:36 -7	M Evans	FG Made	A Lewallen Assist
K Harrod	FT Made		26-32	3	4:16 -6			
K Harrod	FT Made		27-32	3	4:16 -5			

KHSAA Basketball - Play by Play Report - Scoring Only (pg 2)

Bullitt East Chargers vs. Butler Bearettes

Date: 03/24/2004 Time: 12 Noon CST Site: Diddle Arena-Bowling Green, KY Attendance: N

Name	Action	Action	Score	Clock	Diff	Name	Action	Action
			27-34	3 3:51	-7	A Lewallen	Putback Made	
			27-35	3 3:51	-8	A Lewallen	FT Made	
			27-36	3 3:44	-9	M McGrath	FT Made	
			27-37	3 3:44	-10	M McGrath	FT Made	
K Followell	Layup Made	B Caple Assist	29-37	3 3:31	-8			
			29-39	3 2:01	-10	M McGrath	Layup Made	
B Caple	FT Made		30-39	3 1:36	-9			
B Caple	FT Made		31-39	3 1:36	-8			
			31-41	3 1:27	-10	J Hedges	FG Made	
			31-44	3 0:52	-13	M McGrath	3Pt Made	A Lewallen Assist
			31-46	3 0:37	-15	N Holman	Layup Made	
K Followell	Layup Made	A Thompson Assist	33-46	3 0:21	-13			

End of Period Summary Chargers 33 Bearettes 46

Largest Lead: Chargers 31 Bearettes 46 (15 pts)

Lead in Period: Chargers 31 Bearettes 46 (15 pts)

7 for 4 oppo pts

2 for 2 pts

4/11 for 36.4 %

4/4 for 100 %

Turnovers

2nd Chances

Field Goals

Free Throws

Lead Changes: 3 Ties: 1

Lead Changes: 0 Ties: 0 (this period)

6 for 4 oppo pts

3 for 3 pts

7/13 for 53.8 %

4/6 for 66.7 %

			33-48	4 7:13	-15	T Gibbs	Layup Made	
			33-50	4 6:46	-17	N Holman	FG Made	
A Thompson	3Pt Made	K Followell Assist	36-50	4 6:34	-14			
A Thompson	FT Made		37-50	4 6:01	-13			
B Caple	Layup Made		39-50	4 5:40	-11			
			39-51	4 5:25	-12	M Evans	FT Made	
			39-52	4 5:25	-13	M Evans	FT Made	
A Thompson	Layup Made		41-52	4 4:40	-11			
			41-53	4 4:12	-12	T Gibbs	FT Made	
B Caple	FT Made		42-53	4 3:37	-11			
B Caple	FT Made		43-53	4 3:37	-10			
K Followell	Layup Made	A Smith Assist	45-53	4 3:19	-8			
K Followell	FT Made		46-53	4 3:19	-7	M McGrath	Personal Foul	
			46-54	4 3:15	-8	M McGrath	FT Made	
A Thompson	FT Made		47-54	4 2:59	-7			
			47-55	4 2:33	-8	A Lewallen	FT Made	
			47-56	4 2:33	-9	A Lewallen	FT Made	
			47-58	4 2:11	-11	A Lewallen	Layup Made	M Evans Assist
B Caple	Personal Foul		47-59	4 1:24	-12	J Hedges	FT Made	
			47-60	4 1:24	-13	J Hedges	FT Made	
			47-61	4 1:00	-14	J Hedges	FT Made	
			47-62	4 1:00	-15	J Hedges	FT Made	

End of Period Summary Chargers 47 Bearettes 62

Largest Lead: Chargers 33 Bearettes 50 (17 pts)

Lead in Period: Chargers 33 Bearettes 50 (17 pts)

6 for 5 oppo pts

5 for 0 pts

4/17 for 23.5 %

5/8 for 62.5 %

Turnovers

2nd Chances

Field Goals

Free Throws

Lead Changes: 3 Ties: 1

Lead Changes: 0 Ties: 0 (this period)

8 for 8 oppo pts

2 for 2 pts

3/7 for 42.9 %

10/13 for 76.9 %

OFFICIAL BASKETBALL BOX SCORE
Butler Bearettes vs Bullitt East Chargers

03/24/2004 12 Noon CST
Final Box Score

Diddle Arena
Bowling Green, KY

No.	Butler Bearettes	Total FG		3-point		Free throw		Rebounds			F	TP	A	TO	BLK	STL	MIN
		FG	FGA	FG	FGA	FT	FTA	Off	Def	Tot							
4	Katie Pratt	0	0	0	0	0	0	0	0	0	0	0	0	0	0	0	DNP
11	Jenna Hedges	3	6	1	2	4	4	1	2	3	2	11	5	3	0	2	29:31
20	Megan McGrath	4	6	1	2	4	6	2	1	3	2	13	0	5	1	2	21:38
21	Jessica Paul	0	0	0	0	0	0	0	0	0	0	0	0	0	0	0	DNP
22	Mandy Evans	3	9	1	4	2	3	0	8	8	2	9	1	2	0	2	26:29
30	Ashley Lewallen	5	11	0	1	3	3	3	3	6	2	13	3	7	3	0	26:22
53	Tia Gibbs	1	11	0	0	3	7	2	0	2	3	5	1	2	1	5	23:01
33	Nicole Holman	3	8	1	2	0	0	1	4	5	3	7	1	1	0	3	21:23
31	Rachel Cummings	1	2	0	0	2	3	2	1	3	1	4	0	1	0	0	10:36
24	Dana Price	0	0	0	0	0	0	0	0	0	0	0	0	0	0	0	1:00
25	Abby Grunwald	0	0	0	0	0	0	0	0	0	0	0	0	0	0	0	DNP
32	Ainsley Lambert	0	0	0	0	0	0	0	0	0	0	0	0	0	0	0	DNP
42	Ashley Harper	0	0	0	0	0	0	0	0	0	0	0	0	0	0	0	DNP
Team (Included in Totals)								1	3	4							
Totals		20	53	4	11	18	26	12	22	34	15	62	11	21	5	14	160
Total FG%:1st half 10 - 33 (30.3%) 2nd half 10 - 20 (50.0%) Game 20 - 53 (37.7%)												Deadball rebounds					
3Pt FG%: 1st half 2 - 8 (25.0%) 2nd half 2 - 3 (66.7%) Game 4 - 11 (36.4%)												4					
FT%: 1st half 4 - 7 (57.1%) 2nd half 14 - 19 (73.7%) Game 18 - 26 (69.2%)																	

No.	Bullitt East Chargers	Total FG		3-point		Free throw		Rebounds			F	TP	A	TO	BLK	STL	MIN
		FG	FGA	FG	FGA	FT	FTA	Off	Def	Tot							
3	Stephanie Judd	0	0	0	0	0	0	0	0	0	1	0	0	0	0	0	1:00
10	Brittany Cagle	4	17	3	9	6	6	0	6	6	2	17	2	4	0	1	29:10
11	Jennifer Beichler	0	2	0	0	0	0	1	0	1	0	0	0	0	0	0	2:21
13	Abby Thompson	3	6	1	1	4	9	0	6	6	2	11	4	11	0	1	27:51
14	Holly Huber	0	0	0	0	0	0	0	1	1	1	0	0	4	0	0	11:59
31	Kasey Harrod	1	6	0	1	2	2	6	5	11	2	4	0	1	1	0	24:29
22	Jacquelyn Bleemel	1	4	0	0	0	0	0	1	1	5	2	1	4	0	1	21:36
42	Katie Followell	3	5	0	0	3	3	1	5	6	3	9	1	2	3	2	20:52
32	Ashton Smith	2	8	0	1	0	0	3	2	5	1	4	2	2	0	2	16:39
20	Kathleen Thompson	0	0	0	0	0	0	0	0	0	0	0	0	1	0	0	2:03
21	Stephanie Mueller	0	0	0	0	0	0	0	0	0	0	0	0	0	0	0	1:00
23	Mollie Bolin	0	0	0	0	0	0	0	0	0	0	0	0	0	0	0	1:00
Team (Included in Totals)								2	0	2							
Totals		14	48	4	12	15	20	13	26	39	17	47	10	29	4	7	160
Total FG%:1st half 6 - 20 (30.0%) 2nd half 8 - 28 (28.6%) Game 14 - 48 (29.2%)												Deadball rebounds					
3Pt FG%: 1st half 2 - 4 (50.0%) 2nd half 2 - 8 (25.0%) Game 4 - 12 (33.3%)												3					
FT%: 1st half 6 - 8 (75.0%) 2nd half 9 - 12 (75.0%) Game 15 - 20 (75.0%)																	

Technical Fouls: None

Attendance: N

Officials: Mike Holt, Jenny Mertle, Tommy Hall

Score by Period	1st	2nd	3rd	4th	Final	Record	Overall	Conf
Butler Bearettes	17	9	20	16	62	Bearettes		
Bullitt East Chargers	12	8	13	14	47	Chargers		

Chargers Bearettes		Chargers Bearettes		Chargers Bearettes	
Points off Turnovers	17	17	Second Effort Points	8	9
Points in the Paint	14	26	3 Point Points	12	12
3pt Efficiency	+14.8	+11.0	Points/Shot	0.81	0.94
Largest Lead	33	50 (17 pts)	Lead Changes	2	
			Bench Points	4	11
			Free Throw Points	15	18
			Defensive Stops	47	51
			Number of Ties	1	

Game comments: None